



## VISFATIN UP-REGULATED sVCAM-1 AND ASSOCIATED WITH THE CHRONIC KIDNEY DISEASE RELATED TO METABOLIC SYNDROME

\*<sup>1,2</sup>Enas N. Morgan and <sup>1</sup>Abeer A. Khalefa

<sup>1</sup>Physiology Department-Faculty of Medicine-Zagazig University-Egypt

<sup>2</sup>PhD, Assist. Professor, College of Medical Rehabilitation, Qassim University, Saudi Arabia

### ARTICLE INFO

#### Article History:

Received 24<sup>th</sup> May, 2013  
Received in revised form  
09<sup>th</sup> June, 2013  
Accepted 26<sup>th</sup> July, 2013  
Published online 23<sup>rd</sup> August, 2013

#### Key words:

Visfatin,  
Obesity,  
High fat diet,  
Proteinurea,  
Chronic kidney diseases.

### ABSTRACT

**Objective:** The present study aimed to clarify the role of visfatin in the pathogenesis of Chronic Kidney Disease (CKD) complicated Metabolic Syndrome (MS).

**Materials and methods:** 30 adult albino rats were included. Rats were divided into three equal groups: group I: served as control; group II: rats received high fat diet (HFD); group III: rats received visfatin injection. The serum levels of visfatin, sVCAM-1, insulin and fasting Serum glucose (FSG) levels were investigated for all groups. Moreover, proteinurea, mean arterial blood pressure (MABP) and histopathological examination were detected.

**Results:** Results showed a development of major systemic alterations similar to human MS, including obesity, hyperglycemia, hyperinsulinemia, and hypertension in rats on a HFD. These systemic changes were accompanied by renal pathophysiological alterations including, high creatinin levels, proteinurea, and atrophy of the glomeruli and sclerosis of the glomerular capillaries. Injection of visfatin was associated with lower levels of FSG, insulin, and HOMA-IR in comparison with both control and HFD-fed groups and high levels of creatinin, proteinurea, and sVCAM-1 in comparison with control. Moreover, mild glomerular atrophy and sclerosis was detected. Visfatin was positively correlated with proteinurea, and sVCAM-1 in both HFD-fed group and visfatin injected group.

**Conclusion:** Visfatin plays an important role in the development of renal injury associated with MS. As it increased the sVCAM-1 level that is considered as a biomarker for endothelial dysfunction and it also caused glomerular sclerosis.

Copyright © Enas N. Morgan and Abeer A. Khalefa, This is an open access article distributed under the Creative Commons Attribution License, which permits unrestricted use, distribution, and reproduction in any medium, provided the original work is properly cited.

### INTRODUCTION

Metabolic syndrome has been reported to be associated with chronic kidney disease (CKD), but the mechanisms remain unclear (Deji *et al.* 2009). Diabetic nephropathy ranks top amongst the causes of end stage renal disease in patients older than 40 years old. It is accounting for 44% of new cases of chronic kidney disease in United States, (diabetes fact sheet, 2007) 20% of cases of end stage renal disease in England (Anse *et al.*, 2007) and it is the leading known cause of chronic renal failure in Pakistan (Rizvi & Manzoor 2002). Moreover, the prevalence of microalbuminuria was 10.6% among the relatives of patients with CKD in Egypt and this prevalence is increased with age, diabetes and obesity (Gouda *et al.*, 2011). Ejerblad *et al.* (2006) was throwing light on the association of adiposity with CKD. This emerging connection has led to the generation of hypotheses about the possible role of adipokines in the pathogenesis of CKD. Visfatin is one of newly emerging adipokines. It is also known as B-cell colony-enhancing factor (PBEF) and Nicotinamide phosphoribosyl transferase (NAMPT), it was first identified by Fukuhara *et al.* in 2005. It has much greater expression in visceral fat and thus named as Visfatin (Root, 2005). Fukuhara *et al.* (2005) identified an insulin mimetic action for visfatin as it binds to insulin receptor at a site different from insulin binding site and increases glucose uptake. It also acts as a Nicotinamide phosphoribosyl transferase and is thus involved in production of reactive oxygen species (ROS) (Revollo *et al.*, 2007). Many recent reports have provided evidence that visfatin is a novel marker of inflammation and its levels are elevated in a number of acute and chronic inflammatory diseases including sepsis, acute lung injury, rheumatoid arthritis, inflammatory bowel disease

(Garcia & Moreno Vinasco 2006, Brentano *et al.*, 2007). Moreover, visfatin expression is increased in foam cell macrophages that have a role in plaque destabilization within unstable atherosclerotic regions (Dahl *et al.*, 2007). Axelson *et al.* in 2007 for the first time reported an increased serum level of visfatin in CKD and later on, several other studies reproduced similar relationship between visfatin and CKD (Yilmaz *et al.*, 2008a, Nüsken *et al.*, 2009). Plasma visfatin concentrations are related to endothelial dysfunction in type-2 diabetic patients and patients with CKD (Malyszko *et al.*, 2009, Yilmaz *et al.*, 2008a). As mentioned before, visfatin levels are elevated in a number of acute and chronic inflammatory diseases (Garcia & Moreno Vinasco 2006). Collectively, these results suggest a new physiological role of visfatin in organ injury. The fibrotic buildup observed by Song *et al.* (2008) and possibility of reactive oxygen species via its activity as a Nicotinamide phosphoribosyl transferase (Nampt) strongly supports the concept that visfatin could be one of the cytokines responsible for renal damage in diabetic nephropathy.

Kang *et al.* (2010) indicated an increase in the visfatin synthesis from renal cells under high glucose conditions that possibly contributes to increased glucose influx into cells through GLUT1, so visfatin may cause acceleration of the diabetic nephropathy through increasing the metabolic alterations. Furthermore, Axelsson *et al.* (2009) also indicated that visfatin was associated with sVCAM-1 (Soluble Vascular Adhesion Molecule-1) which is a biomarker of endothelial damage in chronic kidney disease. In addition an association was observed between proteinuria and visfatin level, and proteinuria is considered as an important predictor of endothelial dysfunction in early diabetic nephropathy (Matthews *et al.*, 1985). It was not clear whether the early increase in plasma visfatin levels in diabetic rats

\*Corresponding author: Enas N. Morgan, Physiology Department-Faculty of Medicine-Zagazig University-Egypt

had a causative role in tissue injury as a pro-inflammatory molecule or its elevation was a compensatory response to decrease insulin resistance. In the current study, we investigated the association between visfatin serum levels and renal damage complicating high fat diet (HFD) induced MS in rats through measuring the sVCAM-1 (biomarker of endothelial damage) and proteinuria (the best indicator of endothelial damage). Moreover, its association with serum levels of glucose, and insulin, HOMA-IR and mean arterial blood pressure (MABP) was detected. The direct effect of visfatin injection on the serum level of sVCAM-1, proteinuria, serum levels of glucose and insulin, HOMA-IR and MABP was investigated in healthy rats. Histopathological examination of the renal tissue for all groups was performed.

## MATERIAL AND METHODS

The current study was carried on 30 male adult albino rats (body weight, 184-205gm). Rats were housed under hygienic conditions, in the animal house of the faculty of medicine Zagazig University at 21°C–24°C in a 12 hr/12 hr light/dark cycle (Lesourd & Mazari 1999). They were given free access to water and food. Rats were divided into three equal groups (n=10). Group I: that was served as a control group; rats were fed standard rat chow that consisted of 25.8% protein, 62.8% carbohydrates and 11, 4% fat (total 12.6 kJ/g), (Ahren & Scheurink 1998). Group II: rats were given HFD with 60% kcal% fat that consists of 16.45 proteins, 25.6% carbohydrate and 55.0% fat (total 23.4kJ/g) in the form of cotton seed oil added to the laboratory chow (Ahren & Scheurink 1998, Cha *et al.*, 2000) for 12 weeks and Group III: rats fed standard rat chow and received visfatin in a dose of 240pmol intravenously as a single bolus injection daily for 12 weeks (Naz *et al.*, 2011). For all groups, body weight was recorded per week, and at the end of the study period. At the end of the experimental period (the end of 12<sup>th</sup> week) rats were placed in separate metabolism cages and food was removed during urine collection. Water was available ad libitum at all times. Urine samples from all surviving animals were collected overnight (approximately 16 hrs) in containers placed on dry ice for proteinuria analysis. After overnight fasting, at 8:00 a.m, blood pressure was measured for all groups. Then the serum sample collected, serum was obtained by allowing the blood samples to clot at room temperature before centrifuging at approximately 3000 rpm for 15 minutes. The serum was stored at -20°C to examine the visfatin levels, sVCAM-1, insulin levels, fasting serum glucose (FSG) level. One Kidney was excised from each animal and was prepared to histopathology.

### The histopathological examination

The kidney tissues were fixed in Bouin's fluid for 48 h. Later, they were dehydrated in graded levels of ethanol, cleared in xylene, and embedded in paraffin wax for sectioning. The 5-µm thick sections were cut, mounted on glass slides, and stained with hematoxylin and eosin for light microscopic analysis.

### Measuring the blood pressures (MABP) for rats

After ketamine hydrochloride (45mg/kg) intraperitoneal injection, the animals were implanted with cannulae (PE50) inserted into the left common carotid artery and the right jugular vein. The arterial cannula was connected to a pressure transducer fitted with F.C. 137 coupler connected to MD4-Oscillograph (Bioscience, Washington) (Martin *et al.*, 2005).

### Biochemical Analysis

#### 1-Determination of Serum visfatin levels

Serum Visfatin was measured using RayBio\_Visfatin Enzyme Immunoassay Kit Protocol Catalog No: EIA-VIS-1 LOT No.: 601344. The performance characteristics of this assay were Intra-Assay: CV<10% Inter-Assay: CV<15%. The minimum detectable concentration of Visfatin is 379 pg/ml or 6.82pM.

**2-Determination of serum glucose levels:** According to Trinder (1969) using glucose enzymatic (GOD-PAP)-liquizyme Kits (Biotechnology, Egypt).

**3-Determination of serum insulin level:** By a solid phase enzyme amplified sensitivity immunoassay according to Starr *et al.* (1978) using KAP1251-INS-EASIA (Enzyme Amplified Sensitivity Immunoassay) Kits (BioSource Europe S.A., Belgium).

**4-HOMA-IR:** it was assessed by homeostasis model assessment (where HOMA= (fasting insulin (µU/ml) x fasting plasma glucose (mg/dl) /405 (Matthews *et al.*, 1985).

**5-Determination of sVCAM-1 serum levels:** Serum sVCAM-1 was measured using Quantikine sVCAM-1 Immunoassay Kit, Catalog No. MVC00. Microplate reader capable of measuring absorbance at 450nm, with the correction wavelength set at 540 nm or 570 nm.

**6-Determination of proteinurea:** Protein concentration in urine was determined by Microlab 300: Vital Scientific, Germany. According to the manufacturer's protocol. Proteinuria is measured by the principle of turbidimetry by using 5% trichloroacetic acid. All the biochemical and hormonal parameter were measured in the Department of Medical Biochemistry, the proteinurea, and creatinin were measured in the Department of Clinical Pathology, while the histopathological examination was done in the Pathology Department, Faculty of Medicine, Zagazig University, Egypt.

### Statistical Analysis

The data obtained in the present study were expressed as mean±SD for quantitative variables and statistically analyzed by using SPSS program (version 17 for windows) (SPSS Inc. Chicago, IL, USA). Analysis of variance (ANOVA) was used to compare the results of all examined cases in all studied groups within group comparisons. Correlations were performed by Pearson 2 tailed test (Kirkwood 1989).

## RESULTS

Table 1 shows the serum visfatin levels (ng/mL), initial body weight "BW" (gm), final BW and some glucose metabolic parameters (glucose"mg/dL", insulin"µIU/mL" and calculated HOMA-IR) in the three studied groups. In HFD-fed group, it was found that the mean value of serum visfatin levels (1.69±0.19) were significantly higher than that of control group (1.31±0.108; P<0.001) and significantly lower than that of visfatin injected group (2.93±0.15). In addition visfatin injected group was significantly higher than that of control group (P<0.001). There was no significant deference in the mean values of initial body weight (BW) among the three groups (192.60±5.86, 192.10±6.45 and 191.20±6.49 respectively; P>0.05), the mean value of final BW in HFD-fed group (334.00±21.82) was significantly higher than that of control group and Visfatin injected group (250.80±6.92 and 253.20±9.90 respectively; P<0.001) and no significant deference in the mean values of final BW between Visfatin injected group and control group (P>0.05). Moreover, no significant correlation was found between visfatin levels and final BW in the three studied groups. As regard glucose metabolic parameters, HFD-fed group had significant higher levels of insulin, glucose, HOMA-IR (42.63±2.49, 287.20±9.86 and 30.67±2.53 respectively) when compared with that of control group (21.13±2.37, 85.70±17.27 and 4.50±1.18 respectively, P<0.001) and visfatin injected group (12.41±1.4263, 72.4±12.88 and 2.254±0.491 respectively P<0.001) and accompanied by positive correlations with visfatin levels (r=+0.825; P<0.01, +0.707; P<0.05, +0.886, P<0.01 respectively). In contrast, the mean values of glucose metabolic parameters in Visfatin injected group were significantly lower than that of control group (P<0.001, P<0.05 and P<0.01 respectively).

**Table 1. Serum visfatin levels (ng/mL), initial body weight “BW” (gm), final BW and some glucose metabolic parameters (glucose”mg/dL”, insulin”μIU/mL” and calculated HOMA-IR) in the three studied groups**

parameters	(N=10)	Group I (control)	Group II (HFD-fed)	Group III (Visfatin injected)
Visfatin (ng/mL)	Mean ± SD	1.31 ± 0.108	1.69 ± 0.19	2.93 ± 0.15
	P(of LSD)		< 0.001*	< 0.001* < 0.05 <sup>§</sup>
Initial BW (gm)	Mean ± SD	192.60 ± 5.86	192.10 ± 6.45	191.20 ± 6.49
	P(of LSD)		NS	NS
Final body weight (gm)	Mean ± SD	250.80 ± 6.92	334.00 ± 21.82	253.20 ± 9.90
	P(of LSD)		< 0.001*	< 0.001 <sup>§</sup>
	r	0.04	0.335	0.31
	P	NS	NS	NS1
Insulin (μIU/mL)	Mean ± SD	21.13±2.37	42.63±2.49	12.41±1.4263
	P(of LSD)		< 0.001*	< 0.001 <sup>§</sup>
	r	0.296	+ 0.825	0.511
	P	NS	< 0.01	NS
Glucose (mg/dL)	Mean ± SD	85.70±17.27	287.20±9.86	72.4±12.88
	P(of LSD)		< 0.001*	< 0.05* < 0.001 <sup>§</sup>
	r	0.590	+0.707	+0.754
	P	NS	< 0.05	< 0.05
HOMA-IR	Mean ± SD	4.50 ± 1.18	30.67±2.53	2.254±0.491
	P(of LSD)		< 0.001*	< 0.01* < 0.001 <sup>§</sup>
	r	0.591	+0.886	-0.815
	P	NS	< 0.01	< 0.01

\* Versus group I § Versus group II r = correlation with visfatin level in the same group

**Table 2. Markers for renal function and MABP in the three studied groups**

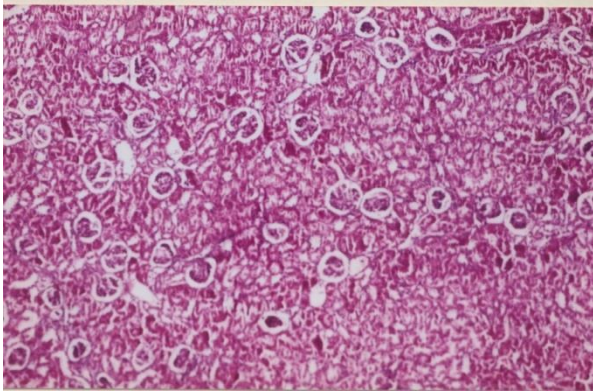
parameters	N=10	Group I (control)	Group II (HFD-fed)	Group III (Visfatin injected)
Creatinine (mg/dL)	Mean ± SD	0.70 ± 0.07	3.15 ± 0.62	1.39 ± 0.12
	P(of LSD)		< 0.001*	< 0.001 <sup>§</sup>
	r	0.277	0.870	0.276
	P	NS	< 0.01	NS
Proteinuria	Mean ± SD	0.70 ± 0.08	1.20 ± 0.13	0.92 ± 0.09
	P(of LSD)		> 0.001*	< 0.001 <sup>§</sup>
	r	0.401	0.889	0.276
	P	NS	< 0.01	NS
sVCAM	Mean ± SD	3.48 ± 0.43	7.65 ± 0.93	5.89 ± 0.72
	P(of LSD)		< 0.001*	< 0.001 <sup>§</sup>
	r	0.177	+ 0.851	+0.965
	P	NS	< 0.01	< 0.001
	r <sup>®</sup>	0.357	0.674	0.843
	P	NS	< 0.05	< 0.01
Mean arterial blood pressure	Mean ± SD	90.2 ± 6.49	123.37±12.70	101.40±7.03
	P(of LSD)		< 0.001*	< 0.05* < 0.001 <sup>§</sup>
	r	0.356	0.900	0.314
	P	NS	< 0.01	NS

\* Versus group I § Versus group II r = correlation with visfatin level in the same group r<sup>®</sup> = correlation with proteinuria level in the same group

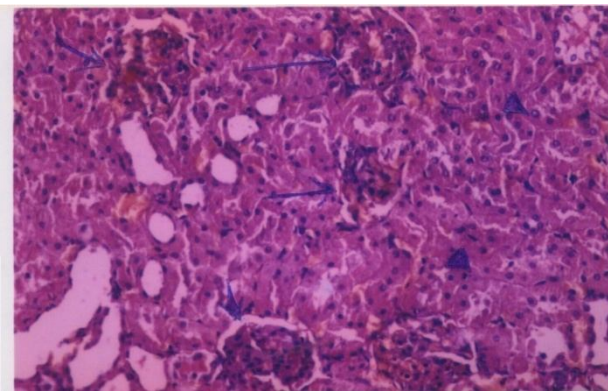
While glucose and HOMA-IR correlated negatively with visfatin levels ( $r=-0.754$ ;  $P<0.05$  and  $-0.641$ ;  $P<0.05$  respectively) insulin did not correlated with visfatin levels. In control group no significant correlations was detected between visfatin levels and insulin, glucose or HOMA-IR.

Table 2 shows the serum Creatinine (mg/dL), sVCAM, Proteinuria, and Mean arterial blood pressure in the three studied groups. In HFD-fed group, it was found that the mean value of serum Creatinine, serum sVCAM and Proteinuria levels ( $3.15\pm0.62$ ,  $7.65\pm0.93$  and  $1.20\pm0.13$  respectively) were significantly higher than that of control group ( $0.70\pm0.07$ ,  $3.48\pm0.43$  and  $0.70\pm0.08$  respectively,  $P<0.001$ ) and that of visfatin injected group ( $1.39\pm0.12$ ,  $5.89\pm0.72$  and  $0.92\pm0.09$  respectively,  $P<0.001$ ). In addition these parameters in visfatin injected group were significantly lower than that of HFD-fed group ( $P<0.001$ ) and significantly higher than that of control group ( $P<0.001$ ). There were significant positive correlations between visfatin levels and Creatinine (mg/dL), Proteinuria and sVCAM ( $r=+0.870$ ;  $P<0.01$ ,  $+0.889$ ,  $P<0.01$  and  $r=+0.851$ ,  $P<0.01$  respectively) in HFD-fed group, and there was no significant correlation detected in control group. In visfatin injected group, there

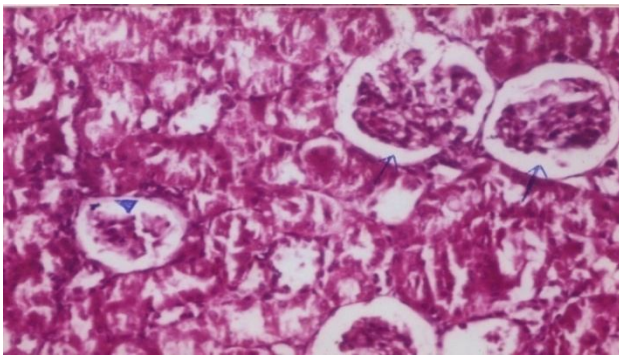
was a significant positive correlation between serum visfatin levels and sVCAM ( $r=+0.965$ ,  $P<0.001$ ). Moreover, there were positive correlation between sVCAM levels and Proteinuria levels in HFD-fed group and visfatin injected group ( $r=+0.674$ ,  $P<0.05$  and  $r=+0.843$ ;  $P<0.01$  respectively). As regard Mean arterial blood pressure, the mean value of HFD-fed group ( $123.37\pm12.70$ ) was significantly higher than that of control group ( $90.2 \pm 6.49$ ,  $P < 0.01$ ) and that of Visfatin injected group ( $101.40\pm7.03$   $p<0.001$ ). Moreover, visfatin injected group it was significantly higher than that of control group ( $P<0.05$ ). The correlation between serum visfatin levels and Mean arterial blood pressure was significant only in HFD-fed group ( $r = +0.900$   $P<0.01$ ). The histopathological examination of the Kidney's tissue showed normal renal tissue formed of normal glomeruli and tubules separated by scanty connective tissue stroma in the control group (Fig. 1). While that for the HFD- received group showed completely atrophic glomeruli with total hyalinization and sclerosis of the glomerular capillaries. Moreover, the renal tubules showed cloudy swelling (Fig. 2). The visfatin injected group showed some atrophic glomeruli with mild sclerosis of the glomerular capillaries (Fig. 3).



**Fig. 1. Photomicrograph of normal renal tissue formed of normal glomeruli and tubules separated by scanty connective tissue stroma (H&E X100)**



**Fig. 2. Photomicrograph of a case of severe diabetic nephropathy showing completely atrophic glomeruli (†) with total hyalinization and sclerosis of the glomerular capillaries – The renal tubules showed cloudy swelling (▲) (H & E X 400)**



**Fig. 3: Photomicrograph of a case of mild diabetic nephropathy showing normal sized glomeruli (†) and atrophic one (▼) showing mild sclerosis of the glomerular capillaries (H&E X400)**

## DISCUSSION

The results of the current study approved a development of major systemic alterations similar to human metabolic syndrome; including obesity, hyperglycemia, hyperinsulinemia, and hypertension in rats on a HFD for 12 weeks. Furthermore, these systemic changes were accompanied by renal pathophysiological alterations including, proteinuria, elevated creatinine level, and atrophy of the glomeruli with total hyalinization and sclerosis of the glomerular capillaries. This renal pathophysiological alterations may caused by Systemic lipid overload “lipotoxicity,” which can induce systemic inflammation and oxidative stress (Van Gaal *et al.*, 2006, Weinberg 2006) and/or the local alteration of lipid metabolism in the kidney (Jiang *et al.*, 2005, Kume, 2007). Moreover, obesity which is an

important character of metabolic syndrome is considered as an important source for several factors called adipokines or adipocytokines (Kershaw & Flier, 2004). Many adipokines have a role in the inflammatory process accompanied with obesity (Bulcao *et al.*, 2006). Visfatin is a novel adipokine that is secreted by visceral and subcutaneous fat with insulin mimetic effect (Fukuhara *et al.*, 2005). This insulin mimic effect was confirmed in the current study, as injection of visfatin caused decrease in the fasting serum glucose levels, insulin levels and HOMA-IR. These results are also congruent with the results of Naz *et al.* (2011) who showed that the administration of exogenous visfatin in obese and diabetic groups of mice resulted in significant reduction in their fasting blood glucose levels but it remained higher than the glucose levels of normoglycaemic mice. However this insulin mimic effect cannot be detected in the HFD-fed group as it showed high levels of visfatin, fasting serum glucose, insulin and HOMA-RI. These results are in line with the results of many other publications in which high fat/high sucrose diets have been used to induce obesity (Boyd *et al.*, 1990, Yaspelkis *et al.*, 2004). In spite of the higher levels of visfatin detected in the HFD-received group, the levels of serum glucose and insulin were high. This may be caused by the development of visfatin resistance during obesity similar to that of insulin resistance as visfatin uses the same receptors of insulin (Hammarstedt *et al.*, 2006). Moreover, in obesity, various adipocytokines have been released from the adipocytes that may neutralize the effect of visfatin and have resulted in visfatin resistance and hyperglycaemia (Naz *et al.*, 2011, Arner 2005). Many researches indicated relation between visfatin and inflammation as its levels were elevated in a number of acute and chronic inflammatory diseases including sepsis, acute lung injury, rheumatoid arthritis, inflammatory bowel disease (Garcia & Moreno Vinasco 2006, Brentano *et al.*, 2007). Also visfatin acts as a Nicotinamide phosphoribosyl transferase and is thus involved in production of reactive oxygen species (Revollo *et al.*, 2007). These findings directed us to propose that visfatin may be released from the adipose tissue as a compensatory mechanism for glucose intolerance however due to its role in inflammation and oxidative reaction; it may cause many systemic worse effects.

In 2007, Axelsson *et al.* reported for the first time an increased serum level of visfatin in CKD and later on, several other studies demonstrated similar relationship between visfatin and CKD (Yilmaz *et al.*, 2008, Nüsken *et al.*, 2009). In the current study we detected significant positive correlations related visfatin levels with creatinine, proteinuria and sVCAM-1 in the HFD-fed group, these results suggested a role for visfatin in CKD that complicating the metabolic syndrome. And these results were in line with the results of other researches that indicated an association of visfatin with sVCAM-1 (Axelsson *et al.*, 2007) and proteinurea (Yilmaz *et al.*, 2008). sVCAM-1 is considered as a biomarker of endothelial damage in chronic kidney disease (Axelsson *et al.*, 2007) and proteinurea is considered as an important predictor of endothelial dysfunction in early diabetic nephropathy (Matthews *et al.*, 1985). In addition our results detected a positive correlation between the sVCAM-1 and the proteinurea in both HFD-fed and visfatin injected groups. Moreover, injection of visfatin in healthy rats caused increase in the levels of proteinurea, creatinin and sVCAM-1, also positive correlation was detected between visfatin levels and sVCAM-1 in this group in addition to mild atrophy and sclerosis in the renal glomeruli. These results strongly support the concept that visfatin has a direct role in the pathogenesis of CKD associated with metabolic syndrome. This association was also confirmed by Mahmood *et al.* (2010) who indicated an association between visfatin and CKD secondary to diabetic nephropathy and other risk factors and they also considered visfatin as a new marker for endothelial dysfunction related to CKD. In other study, the plasma visfatin concentration was found to correlate with hsCRP and resistin levels, this result makes it to be considered as a potential link with inflammation and as inflammation and hyperlipidemia are risk factors of atherosclerosis, visfatin may play some role in linking lipid dysregulation and inflammation to atherosclerosis (Mu *et al.*, 2011). This relation appeared obviously in

our study as high level of visfatin in HFD-fed group and also visfatin injection were accompanied by sclerosis of the glomerular capillaries and increased MABP. Kim *et al.* (2008) investigated the effect of visfatin on vascular inflammation, and they concluded that visfatin induced leukocyte adhesion to endothelial cells by induction of the cell adhesion molecules (CAMs), intracellular adhesion molecule-1 (ICAM-1) and VCAM-1 and it also stimulated ROS generation in endothelial cells through its NADPH dependent ROS production. These observations, support the concept that visfatin may be able to accelerate vascular diseases. At the molecular level Song *et al.* (2008) indicated that treatment of cultured mesangial cells with recombinant visfatin caused activation of protein kinase a and b, and dramatic increase in the synthesis of profibrotic molecules including TGF- $\beta$  (Transforming growth factor beta), Plasminogen activation inhibiting factor-1 (PAI-1) and type-1 collagen which are considered as contributors in pathogenesis of diabetic nephropathy.

## Conclusion

This study suggests that visfatin may play an important role in the development of renal injury associated with metabolic syndrome. As it increased the sVCAM-1 level that is considered as a biomarker for endothelial dysfunction and it also caused glomerular sclerosis. Visfatin may also play its role in vascular inflammation; through its NADPH dependent ROS production, so the exact mechanism is needed to be elucidated. We would like to address this issue in our future studies.

## Acknowledgment

The author is grateful to faculty of Medicine- Zagazig University for providing the necessary facilities and also would like to acknowledge all the contributors in the Departments of Clinical Pathology, Pathology and Medical Biochemistry for providing great help in the analytic part of the research.

## REFERENCES

- Ahren, B. and Scheurink, A.J.W. 1998. Marked hyperleptinemia after high fat diet associated with severe glucose intolerance in mice. *Eur. J. Endocrinol.*, 139: 461–467.
- Ansell, D., Feehally, J., Feest, T.G., Tomson, C., Williams, A.J., and Warwick, G. 2007. The Renal Association UK Renal Registry. The Tenth Annual Report December.
- Arner, P. 2005. Insulin resistance in type 2 diabetes-role of adipokines. *Curr Mol Med.*, 5:333–339.
- Axelsson, J., Witasp, A., Carrero, J.J., Qureshi, A.R., Suliman, M.E., Heimbürger, O., Bárány, P., Lindholm, B., Alvestrand, A., Schalling, M., Nordfors, L. and Stenvinkel, P. 2007. Circulating levels of visfatin/pre-B-cell colony-enhancing factor 1 in relation to genotype, GFR, body composition, and survival in patients with CKD. *Am J Kidney Dis*, 49: 237–44.
- Boyd, J., Contreras, I., Kern, M., Tapscott, E., Downes, D., Frisell, W. and Dohm, G. 1990. Effect of a high-fat-sucrose diet on in vivo insulin receptor kinase activation. *Am J Physiol.*, 259: E111–116.
- Brentano, F., Schorr, O., Ospelt, C., Stanczyk, J., Gay, R.E., Gay, S. and Kyburz, D. 2007. Pre-B cell colony-enhancing factor/visfatin, a new marker of inflammation in rheumatoid arthritis with proinflammatory and matrix-degrading activities. *Arthritis Rheum*; 56: 2829–39.
- Bulcao, C., Ferreira, S.R., Giuffrida, F.M., and Ribeiro-Filho, F.F. 2006. The new adipose tissue and adipocytokines. *Curr Diabetes Rev.*, 2(1):19–28.
- Centers for Disease Control and Prevention. National diabetes fact sheet: general information and national estimates on diabetes in United States, 2007.
- Cha, M.C., Chou, J. and Boozer, C.N. 2000. High-fat diet feeding reduces the diurnal variation of plasma leptin concentration in rats. *Metab.*, 48:503–507.
- Dahl TB, Yndestad A, Skjelland M, Øie E, Dahl A, Michelsen A, Damås J K, Tunheim S H, Ueland T, Smith C, Bendz B, Tonstad S, Gullestad L, Frøland S, Krohg-Sørensen K, Russell D, Aukrust P, Halvorsen B. Increased expression of visfatin in macrophages of human unstable carotid and coronary atherosclerosis: possible role in inflammation and plaque destabilization. *Circulation* 2007; 115: 972–980.
- Deji, N., Kume, S., Araki, S., Soumura, M., Sugimoto, T., Isshiki, K., Chin-Kanasaki, M., Sakaguchi, M., Koya, D., Haneda, M., Kashiwagi, A. and Uzu, T. 2009. Structural and functional changes in the kidneys of high-fat diet-induced obese mice. *Am J Physiol Renal Physiol.*, 296: F118–F126.
- Ejerblad, E., Fored, C.M., Lindblad, P., Fryzek, J., McLaughlin, J.K., and Nyrén, O. 2006. Obesity and risk for chronic renal failure. *J Am Soc Nephrol.*, 17: 1695–702.
- Fukuhara, A., Matsuda, M., Nishizawa, M., Segawa, K., Tanaka, M., Kishimoto, K., Matsuki, Y., Murakami, M., Ichisaka, T., Murakami, H., Watanabe, E., Takagi, T., Akiyoshi, M., Ohtsubo, T., Kihara, S., Yamashita, S., Makishima, M., Funahashi, T., Yamanaka, S., Hiramatsu, R., Matsuzawa, Y., Shimomura, I. 2005. Visfatin: a protein secreted by visceral fat that mimics the effects of insulin. *Science*, 307: 426–30.
- Garcia, J.G., and Moreno Vinasco, L. 2006. Genomic insights into acute inflammatory lung injury. *Am J Physiol Lung Cell Mol Physiol.*, 291:L1113–7.
- Gouda, Z., Mashaal, G., Bello, A.K., Attar, A.E., Kemmery, T.E., El Reweny, A., El Nahas M.Egypt information, Prevention and treatment of chronic kidney disease (EGIPT-CKD) programme: prevalence and risk factors of microalbuminuria among the relatives of patients with CKD in Egypt. *Saudi J Kidney Dis Transpl* 2011; 22 (5):1055-1063.
- Hammarstedt, A., Pihlajamaki, J., Rotter Sopasakis, V., Gogg S., Jansson P.A., Laakso, M., and Smith, U. 2006. Visfatin is an adipokine, but it is not regulated by thiazolidinediones. *J Clin Endocrinol Metab.*, 91:1181–1184.
- Jiang, T., Wang, Z., Proctor, G., Moskowitz, S., Liebman, S.E., Rogers, T., Lucia, M.S., Li, J., and Levi, M. 2005. Diet-induced obesity in C57BL/6J mice causes increased renal lipid accumulation and glomerulosclerosis via a sterol regulatory element-binding protein-1c-dependent pathway. *J Biol Chem.*, 280: 32317–32325.
- Kang, Y.S., Song, H.K., Lee, M.H., Ko, G.J., Han, J.Y., Han, S.Y., Han, K.H., Kim, H.K., and Cha, D.R. 2010. Visfatin is upregulated in type-2 diabetic rats and targets renal cells. *Kidney Int.*, 78:170–81.
- Kershaw, E. and Flier, J.S. 2004. Adipose tissue as an endocrine organ. *J Clin Endocrinol Metab*, 89: 2548–56.
- Kim, S.R., Bae, Y.H., Bae, S.K., Choi, K.S., Yoon, K.H., Koo, T.H., Jang, H.O., Yun, I., Kim, K.W., Kwon, Y.G., Yoo, M.A. and Bae, M.K. 2008. Visfatin enhances ICAM-1 and VCAM-1 expression through ROS-dependent NF- $\kappa$ B activation in endothelial cells. *Biochim Biophys Acta.*, 1783(5):886–95.
- Kirkwood, B. 1989. *Essentials of medical statistics*. Black well Scientific Publication, Oxford, London, 151.
- Kume, S., Uzu, T., Araki, S., Sugimoto, T., Isshiki, K., Chin-Kanasaki, M., Sakaguchi, M., Kubota, N., Terauchi, Y., Kadowaki, T., Haneda, M., Kashiwagi, A. and Koya, D. 2007. Role of altered renal lipid metabolism in the development of renal injury induced by a high-fat diet. *J Am Soc Nephrol.*, 18: 2715–2723.
- Lesourd, B. and Mazari, L. 1999. Nutrition and immunity in the elderly. *Proceeding of Nutrition Society.*, 58 (3):94–200.
- Mahmood, N., Junejo, A.M., Jamal, Q. and Awan, R. 2010. Association of visfatin with chronic kidney disease in a cohort of patients with and without diabetes. *J Pak Med Assoc.*, 60 (11), 922–926
- Malyszko, J., Malyszko, J.S., and Mysliwiec, M. 2009. Visfatin, a new adipocytokine, is predominantly related to inflammation/

- endothelial damage in kidney allograft recipients. *Transplant Proc.*, 41: 150–3.
- Martin, D.S., Biloft, S., Redetzke, R., and Vogel, E. 2005. Castration reduces blood pressure and autonomic venous tone in male spontaneously hypertensive rats. *Journal of Hypertension*, 23(12), 2229–2236.
- Matthews, D.R., Hosker, J.P., and Rudenski, A.S., Naylor, B.A., Treacher, D.F., and Turner, R.C. 1985. Homeostasis model assessment: insulin resistance and beta-cell function from fasting plasmaglucoase and insulin concentrations in man. *Diabetologia.*, 28:412–419.
- Mu, J., Feng, B., Ye, Z., Yuan, F., Zeng, W., Luo, Z. and Qi, W. 2011. Visfatin is related to lipid dysregulation, endothelial dysfunction and atherosclerosis in patients with chronic kidney disease. *J Nephrol.*, 24(2):177–84
- Naz, R., Hameed, W., Hussain, M.M., and Aslam, M. 2011. Glucose lowering effect of visfatin in obese and insulin dependent diabetes mellitus. *Pak J Physiol.*, 7(1):4-7
- Nüsken, K.D., Petrasch, M., Rauh, M., Stöhr, W., Nüsken, E., Schneider, H., and D'otsch, J. 2009. Active visfatin is elevated in serum of maintenance haemodialysis patients and correlates inversely with circulating HDL cholesterol. *Nephrol Dial Transplant*, 24: 2832–8.
- Revollo, J.R., Grimm, A.A., and Imai, S. 2007. The regulation of nicotinamide adenine dinucleotide biosynthesis by Nampt/PBEF/visfatin in mammals. *Curr Opin Gastroenterol.*, 23: 164-70.
- Rizvi, S.A. and Manzoor, K. 2002. Causes of Chronic Renal Failure in Pakistan: A Single Large Center Experience. *Saudi Journal of Kidney Diseases and Transplantation*, 13:376–9.
- Root, A.W. 2005. Visfatin a new visceral fat adipokine. *Growth, Genetics and Hormones*, 21:21-4.
- Song, H.K., Lee, M.H., Kim, B.K., Park, Y.G., Ko, G.J., Kang, Y.S., Han, J.Y., Han, S.Y., Han, K.H., Kim, H.K., and Cha, D.R. 2008. Visfatin: a new player in mesangial cell physiology and diabetic nephropathy. *Am J Physiol Renal Physiol.*, 295: 1485–94.
- Starr, J.I., Mako, M.E., and Juhn, D.1978. Rubenstein AH. Measurement of serum pro-insulin-like material: cross reactivity of porcine and human proinsulin. *J. Lab. Clin. Med.*, 1978; 91:691–692.
- Trinder, P.1969. Enzymatic determination of glucose. *An. Clin. Bioch.*, 6:24–27.
- Van Gaal, L.F., Mertens, I.L., and De Block, C.E. 2006. Mechanisms linking obesity with cardiovascular disease. *Nature*, 444:875–880.
- Weinberg, J.M. 2006. Lipotoxicity. *Kidney Int.*, 70: 1560–1566.
- Yaspelkis, B., Singh, M., Krisan, A., Collins, D., Kwong, C., Bernard, J. and Crain, A. 2004. Chronic leptin treatment enhances insulin-stimulated glucose disposal in skeletal muscle of high-fat fed rodents. *Life Sci.*, 74: 1801–1816.
- Yilmaz, M.I., Saglam, M., Carrero, J.J., Qureshi, A.R., Caglar, K., Eyileten, T., Sonmez, A., Cakir, E., Yenicesu, M., Lindholm, B., Stenvinkel, P., Axelsson, J. 2008. Serum visfatin concentration and endothelial dysfunction in chronic kidney disease. *Nephrol Dial Transplant*, 23: 959–65.

\*\*\*\*\*